

CARACKMON

CARACKMON

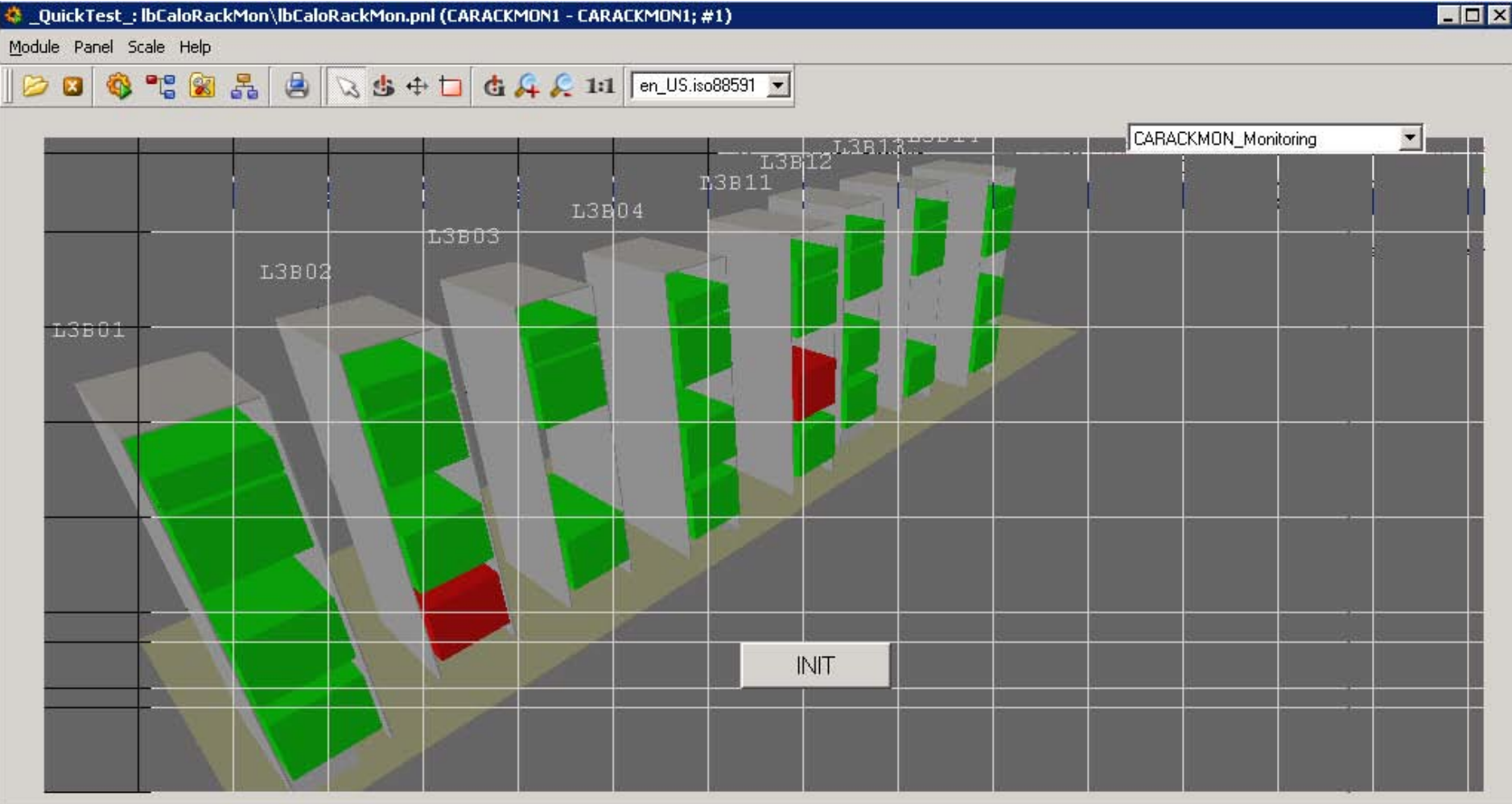
- The goal of the CARACKMON project's :
Control the racks power supply
- Project exist but we rewrite the project
 - Create a new component : lbRackMon
 - Last version: 1.1.0
 - Installation of component in CARACKMON project's
 - rewriting of main panel

An user interface very simplified

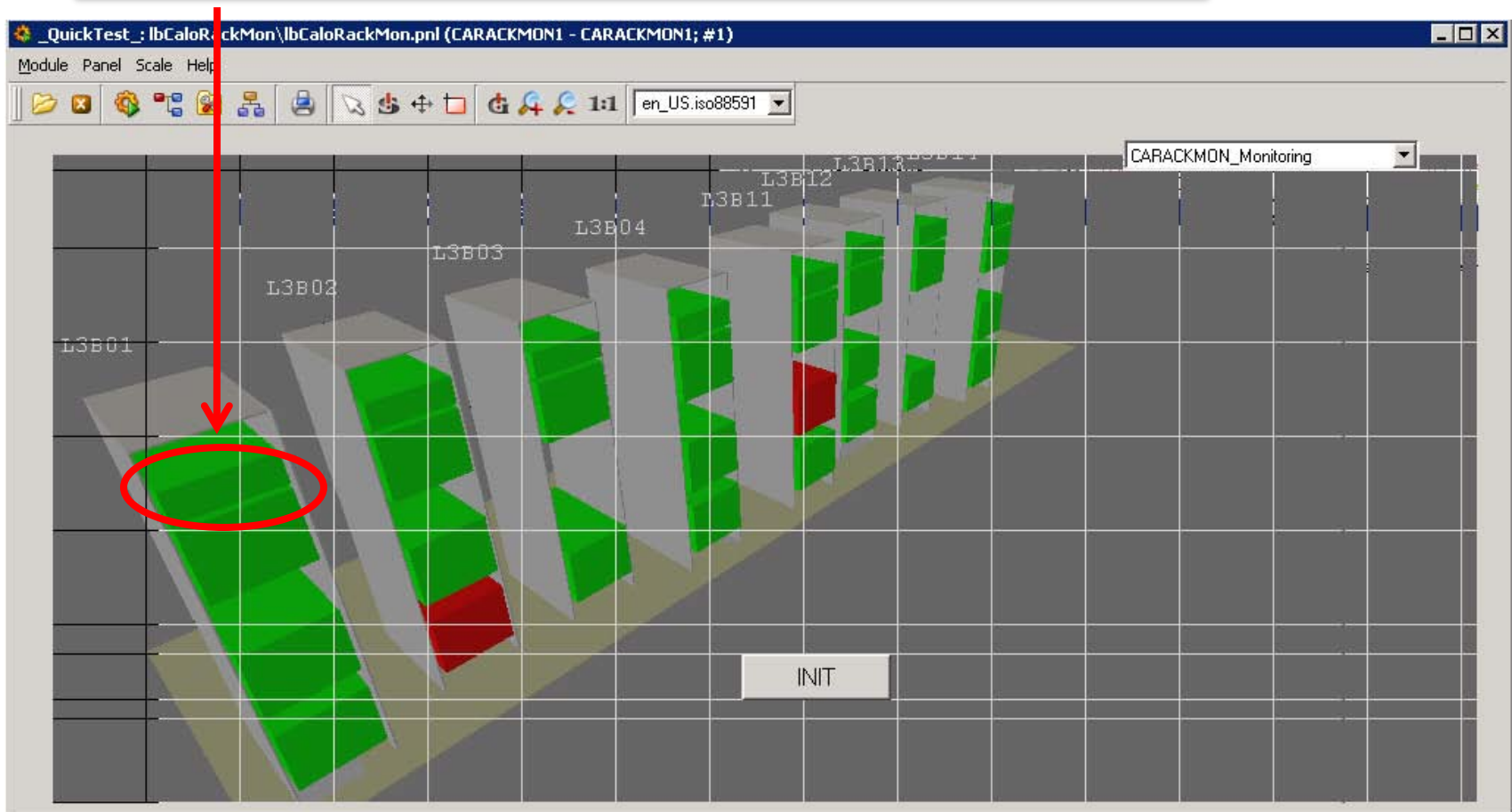
An generic user interface

Use the component 3Dviewer

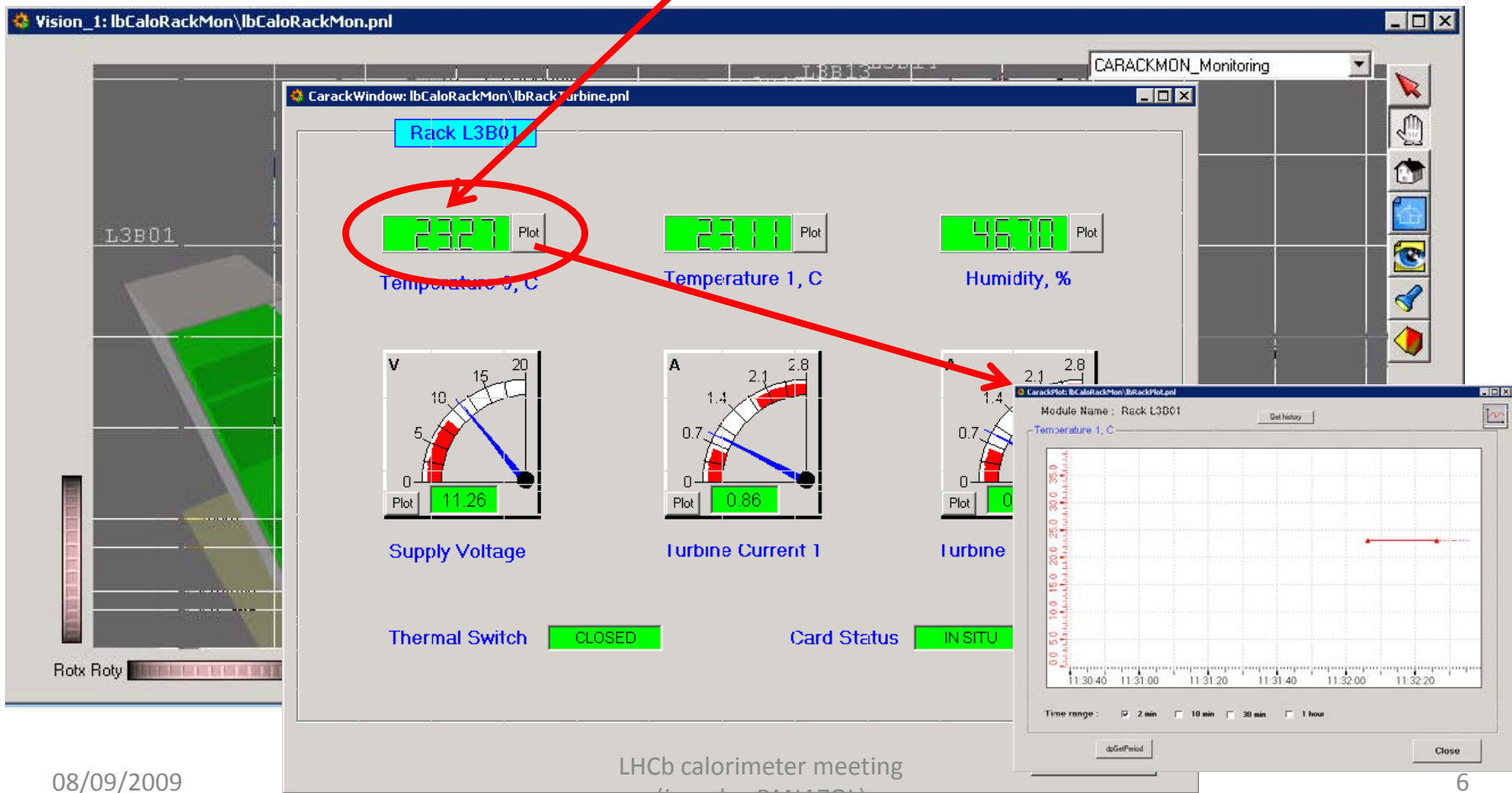
- dynamic interface(zoom, rotation, move, view)
- development of a code to parse "xml" files, and generate dynamic user interface in 3Dviewer
- Every part's is linked with a data point
- Each part's can be linked with a real objet to control (an another Data Point)
 - Value of temperature, current, voltage etc.



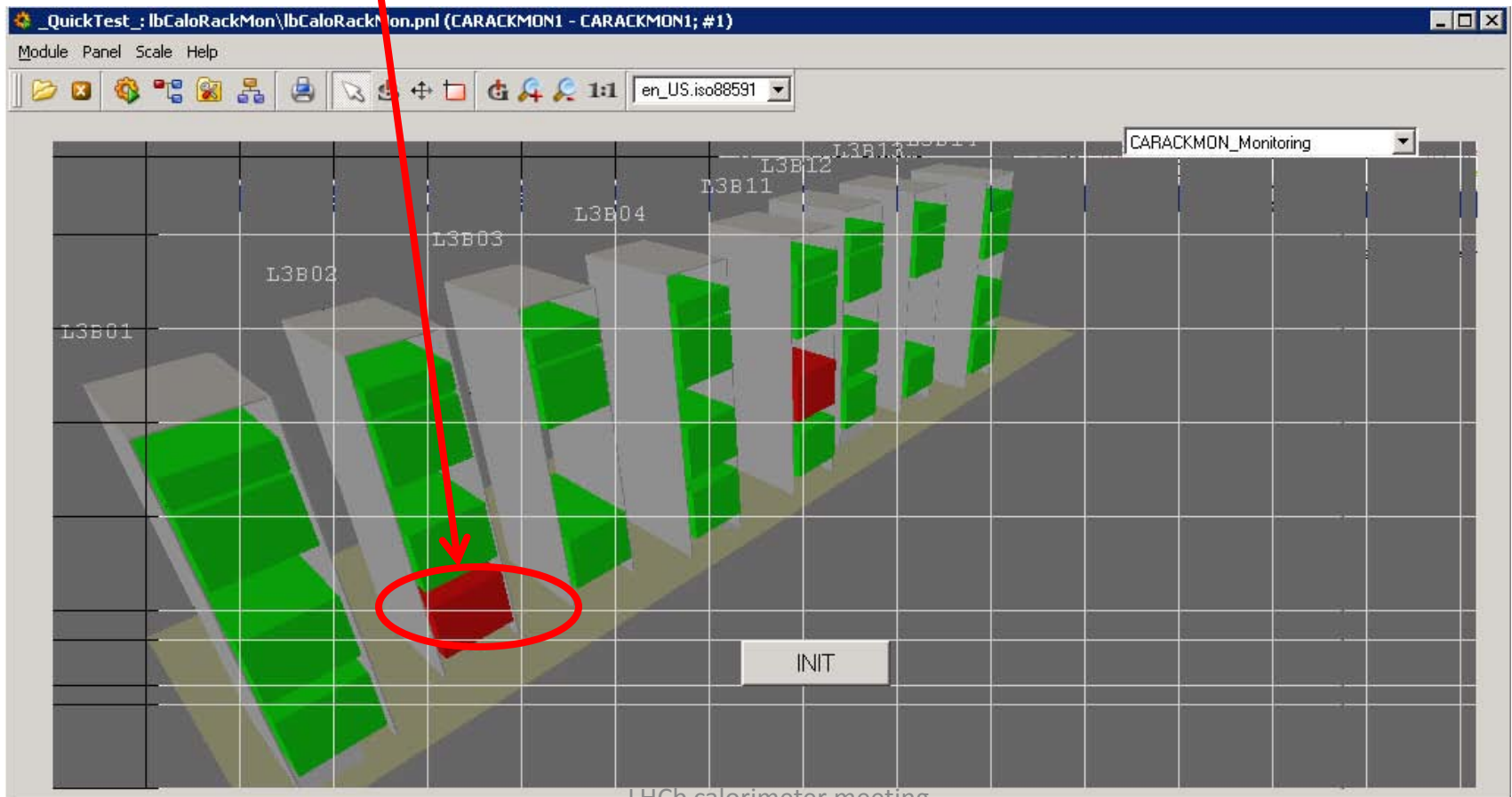
The state of turbine of L3B01 rack .



You can control the turbine easily and show review



Example pb with one Crate



Example: Here pb of temperature reading

CarackWindow: lbCaloRackMon\lbRackECAL.pnl

Rack L3B02 ECAL12

2193 Plot

-050 Plot -050 Plot

-050 Plot -050 Plot

CROC Temperature, C

TVB Temperature under mezzanine, C

TVB Temperature between FPGA's, C

MARATON POWER SUPPLY

Power On

Output Channels OK

Remote Control ENABLED

Channel Name	Voltage	Current
ECMATN04/Channel6	5.001	0.340
ECMATN04/Channel7	5.017	12.012
ECMATN04/Channel8	0.078	1.078
ECMATN04/Channel9	3.414	41.070
ECMATN04/Channel10	0.057	1.074
ECMATN04/Channel11	5.091	56.633

Close

Vision_1: lbCalo

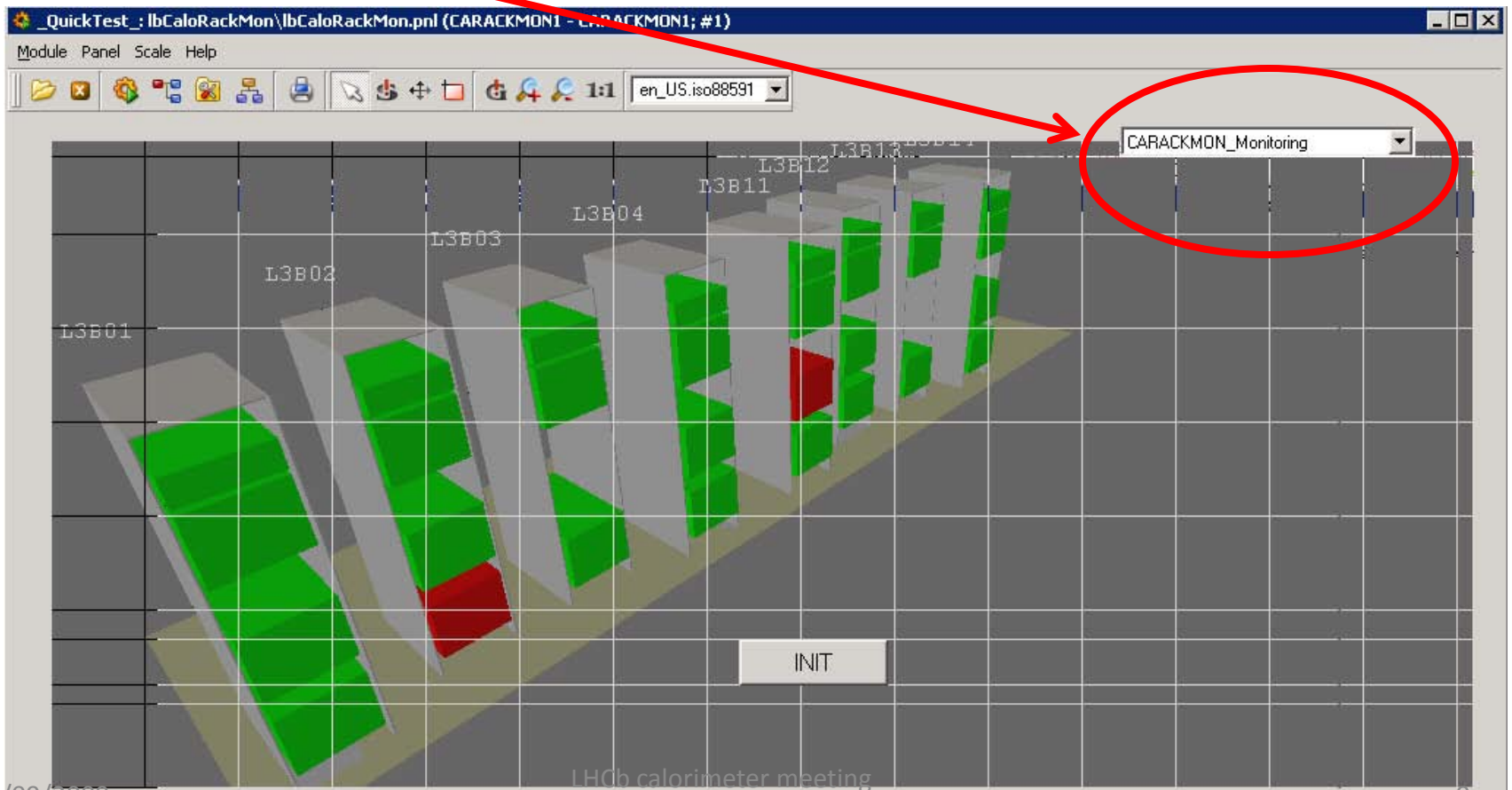
L3B02

Rotx Roty

CARACKMON_Monitoring

Dolly

you can also start external programs just by changing this selector.



When you click on one element



You start an another program

QuickTest : lbCaloRackMon\lbCaloRackMon.pnl (CARACKMON1 - CARACKMON1; #1)

Module Panel Scale Help

en_US.iso88591

Vision_1: mainPanel

Rack Status Select the zone for which the rack status must be shown : CaloA

Group : CaloA

Rack	Rack Status	ThermoS	Tubines OK	PS	Hum	Dev
L3A13	OK	21.4	OK	11.27V	47%	9.6
L3B11	OK	21.9	OK	11.40V	48%	10.5
L3B12	OK	23.2	OK	11.35V	45%	10.5
L3B13	OK	21.4	OK	11.33V	49%	10.3
L3B14	OK	23.0	OK	11.27V	45%	10.5

CARACKMON

- Conclusion :
 - CARACKMON installed in « CADCS02W » computer
 - Version 3.6 (not 3.8)
 - The Project don't start automatically (manual mode)
 - No « shortcut » (call the main panel).